



**Government of India
Ministry of Earth Sciences
India Meteorological Department**



Press Release

Date: 10th April, 2025

Time of Issue: 1400 hours IST

Subject: i) Under the influence of Western Disturbance; rainfall along with thunderstorm & lightning, gusty/squally winds and hailstorm likely over Northwest India on 10th & 11th April. As a result, prevailing heat wave conditions will abate from tomorrow, the 11th April.

ii) Rainfall along with thunderstorm & lightning is likely to continue over East & Northeast India during next 5 days.

i. Realised weather during past 24 hours till 0830 hours IST of today, the 10th April 2025 (Annexure I):

- ❖ **Heat wave to severe heat wave conditions** prevailed over most parts of Rajasthan; in some parts of Saurashtra & Kutch; **Heat wave conditions** prevailed over some parts of Gujarat Region; in isolated pockets of South Haryana, Delhi and Madhya Pradesh.
- ❖ **Warm night conditions** prevailed in isolated pockets of Madhya Pradesh, Madhya Maharashtra and Marathwada.
- ❖ **Hailstorm** occurred at isolated places over East Uttar Pradesh, South Haryana, Uttarakhand, Himachal Pradesh and Meghalaya.
- ❖ **Heavy to very heavy rainfall** recorded at isolated places over Bihar and **heavy rainfall** over Sub-Himalayan West Bengal & Sikkim.
- ❖ **Thunderstorm accompanied with Squally/Gusty winds** prevailed at isolated locations over Jammu-Kashmir-Ladakh-Gilgit-Baltistan-Muzaffarabad, Uttarakhand, Himachal Pradesh, Haryana, Uttar Pradesh, Rajasthan, Bihar, Sub-Himalayan West Bengal & Sikkim, Assam & Meghalaya, Nagaland, Manipur, Mizoram & Tripura, Kerala & Mahe, Lakshadweep and Andaman & Nicobar Islands.

For more details of realised weather, kindly refer [Annexure I](#)

Temperature:

- ❖ Temperature observations during past 24 hours till 0830 hours IST of today are provided in [Annexure II](#).

ii. Weather Systems, Forecast and Warnings (Annexure III & IV):

- ❖ The **Low-pressure area** over westcentral Bay of Bengal persisted at 0830 hrs IST of today, the 10th April, 2025 with the associated cyclonic circulation extending upto middle tropospheric levels. It is likely to move north-northeastwards and weaken gradually over central Bay of Bengal during next 24 hours. Under its influence squally weather wind speed reaching 35-45 Kmph gusting to 55 Kmph likely over central & northeast Bay of Bengal during next 24 hours.
- ❖ The **Western Disturbance** as a **trough** in westerlies in middle tropospheric levels runs roughly along Long. 68°E to the north of Lat. 28°N and another along Long. 77°E to the north of Lat. 21°N. **An upper air cyclonic circulation** lies over south Pakistan, 2nd over Punjab and 3rd over northwest Madhya Pradesh and a trough runs from west Rajasthan to Marathwada in lower tropospheric levels.
- ❖ The **upper air cyclonic circulations** also lie over north Bangladesh, 2nd over south assam and 3rd over northeast Assam in lower tropospheric levels and 04th over northeast Bihar in lower & middle tropospheric levels.

Under the influence of these systems:

- ✓ **Scattered to fairly widespread** light/moderate rainfall accompanied with **thunderstorm, lightning & gusty winds (speed 40-50 kmph)** likely over Jammu-Kashmir-Ladakh-Gilgit-Baltistan-Muzaffarabad and Himachal Pradesh on 10th & 11th and Uttarakhand during 10th-12th April.
- ✓ **Scattered to fairly widespread** light/moderate rainfall accompanied with **thunderstorm, lightning & gusty winds (speed 40-50 kmph)** likely over northeast and adjoining east India during next 7 days.
- ✓ Isolated to scattered rainfall accompanied with **thunderstorm, lightning & gusty winds (speed 40-50 kmph)** likely over plains of Northwest, Central and adjoining East India during 10th-12th April.
- ✓ **Heavy rainfall** likely over Bihar on 10th & 11th; Sub-Himalayan West Bengal & Sikkim and Arunachal Pradesh during 10th-12th; Assam & Meghalaya during 10th-13th April.
- ✓ **Isolated Hailstorm** likely over Haryana, East Uttar Pradesh, north Chhattisgarh, East Madhya Pradesh, Jharkhand, Assam & Meghalaya on 10th; Jammu-Kashmir, Himachal Pradesh, Uttarakhand and Punjab on 10th & 11th April.
- ✓ **Duststorm** very likely at isolated places over West Rajasthan on 10th & 11th April.
- ✓ **Thundersquall (wind speed reaching 50-60 kmph)** very likely at isolated places over Haryana, East Uttar Pradesh, Bihar and Assam & Meghalaya on 10th; Uttarakhand, Punjab and Sub-Himalayan West Bengal & Sikkim on 10th & 11th April
- ❖ **Scattered to fairly widespread** light/moderate rainfall accompanied with **thunderstorm, lightning & gusty winds (speed 30-40 kmph)** likely over Kerala & Mahe during next 7 days and Lakshadweep during next 3 days. **Isolated to Scattered** light/moderate rainfall accompanied with **thunderstorm, lightning & gusty winds (speed 40-50 kmph)** likely over Tamilnadu, Puducherry & Karaikal, Coastal Andhra Pradesh & Yanam, Telangana, Karnataka during next 5 days.

Temperature Forecast:

- ❖ Fall by 3-5°C in maximum temperatures likely over Northwest India during next 3 days and gradual rise by 2-4°C thereafter during subsequent 4 days.
- ❖ Fall by 2-4°C in maximum temperatures likely over Central India during next 3 days and no significant change thereafter during subsequent 4 days.
- ❖ Fall by 2-4°C in maximum temperatures likely over west India during next 3 days and gradual rise by 2-3°C thereafter during subsequent 4 days.
- ❖ No significant change over rest parts of the country.

Heat wave, warm night and Hot & Humid weather warning:

- ❖ **Heat wave conditions** very likely at Rajasthan, south Haryana, Gujarat and Madhya Pradesh on 10th April.
- ❖ **A fresh spell of Heat wave conditions** likely at West Rajasthan from 14th to 16th, East Rajasthan, Haryana and Punjab on 16th April.
- ❖ **Hot & humid** weather is likely to prevail over coastal areas of Gujarat and Maharashtra on 10th April.

iv. Weather conditions and forecast over Delhi/NCR during 10th April to 13th April, 2025 (Annexure V)

For more details, kindly refer National Weather Bulletin:

https://mausam.imd.gov.in/responsive/all_india_forecast_bulletin.php

For District wise warnings refer: <https://mausam.imd.gov.in/responsive/districtWiseWarningGIS.php>

Significant weather reported during past 24 hours till 0830 hours IST of today:

- ❖ **Light/moderate Rainfall** observed at many places over Jammu-Kashmir-Ladakh-Gilgit-Baltistan-Muzaffarabad, Sub-Himalayan West Bengal & Sikkim, Andaman & Nicobar Islands, Uttarakhand; a few places over Bihar, Kerala, Lakshadweep, South Interior Karnataka, Tamilnadu Puducherry & Karaikal; at isolated places over Arunachal Pradesh, Assam & Meghalaya, Nagaland, Manipur, Mizoram & Tripura, Odisha, Jharkhand, Himachal Pradesh, Haryana, Uttar Pradesh, Rajasthan, Konkan & Goa, Coastal Andhra Pradesh & Yanam, Coastal Karnataka, North Interior Karnataka, Vidarbha and Chhattisgarh.

Rainfall recorded (in cm):

- ❖ **Sub-Himalayan West Bengal & Sikkim:** Jalpaiguri (dist Jalpaiguri) 10, Cooch Behar (dist Cooch Behar) 5, Bagdogra IAF (dist Darjeeling) 5, Amfu Pundibari (dist Cooch Behar) 4, Darjeeling (dist Darjeeling) 4, Kabi (dist Mangan) 3;
- ❖ **Kerala:** Varkala (dist Thiruvananthapuram) 6, Padannakkad (dist Kasargod) 5, Konni (dist Pathanamthitta) 4, Punalur (dist Kollam) 4, Thennala (dist Malappuram) 4, Kudulu (dist Kasargod) 3, Aryankavu (dist Kollam) 3, Chemberi (dist Cannur) 3, Peringome (dist Cannur) 3;
- ❖ **Jammu-Kashmir:** Nowgam (dist Kupwara) 3;
- ❖ **South Interior Karnataka:** Somwarpet (dist Kodagu) 4, Kalasa (dist Chikkamagaluru) 3;
- ❖ **Tamilnadu:** Mylaudy (dist Kanyakumari), Kottaram (dist Kanyakumari) 6 each, Kannimar (dist Kanyakumari), Mambzhathuraiyaru (dist Kanyakumari) 4 each, Anaikedanku (dist Kanyakumari), Adayamadai (dist Kanyakumari), Needamangalam (dist Thiruvarur) 3;
- ❖ **Odisha:** Kolnara (dist Rayagada) 4;
- ❖ **Meghalaya:** Shillong_Aws (dist East Khasi Hills) 3, Shillong C.s.o. (dist East Khasi Hills) 3;
- ❖ **Bihar:** Supaul 12.

Realised Gusty Winds during past 24hours (Received from RMCs/MCs/AWS) in (knots, hrs IST)

Ladakh: Kargil (36, 1830);

Jammu-Kashmir: Ramban (34, 1700);

Uttar Pradesh: Kannauj (32, 0645);

Arunachal Pradesh: West Kamey (32, 1300);

Madhya Pradesh: Ashoknagar (32, 0100);

Rajasthan: Sikar (38, 1930);

Telangana: Wanaparthy (42, 1845);

Kerala: Kannur-38, Kasargode-44, Palakkad-38;

Temperature observations during past 24 hours till 0830 hours IST of today:

- ❖ Yesterday, the Maximum Temperatures have fallen by 4-8°C over Jammu, Kashmir, west Bihar; by 2-4°C over Ladakh, Assam, West Bengal, extreme south Gujarat region & Saurashtra, north interior Karnataka, extreme north Andaman; 1-2°C over Rajasthan, east & northwest Madhya Pradesh, south Chhattisgarh, North coastal Andhra Pradesh and no significant change over rest parts of the country.
- ❖ Yesterday, **Maximum Temperatures** were in the range of **42-44°C** at many places over Rajasthan, Saurashtra & Kutch; at a few places over Gujarat Region, West Madhya Pradesh; at isolated places over Haryana, Madhya Maharashtra; **38-42°C** at most places over East Madhya Pradesh; at many places over Delhi, Uttar Pradesh, Chhattisgarh, Marathwada, Vidarbha, Odisha, Rayalaseema; at a few places over Punjab, Telangana; at isolated places over northwest Jharkhand, North Interior Karnataka, Coastal Andhra Pradesh & Yanam, north Tamil Nadu. Yesterday, the highest **maximum temperature of 45.6°C** was reported at **Kandla (Saurashtra & Kutch)** over the country. **(Fig.1)**
- ❖ Yesterday, Maximum Temperatures were **above normal by 4-7°C** at most places over Rajasthan, Gujarat, Haryana- Chandigarh-Delhi, Punjab, Himachal Pradesh, Jammu-Kashmir-Ladakh-Gilgit-Baltistan-Muzaffarabad, Arunachal Pradesh and adjoining Assam; at some parts of West Uttar Pradesh, West Madhya Pradesh; **by 1-3°C** at Uttar Pradesh, Nagaland, Manipur, Mizoram & Tripura, Vidarbha, Madhya Maharashtra, Marathawada, Konkan & Goa. These were **below normal by 1-3°C** at many places over Gangetic West Bengal, Bihar, Odisha, Telangana, Coastal Andhra Pradesh & Yanam and Rayalaseema; at a few places over Sub-Himalayan West Bengal & Sikkim, north interior Karnataka and Tamilnadu Puducherry & Karaikal and near normal over rest parts of the country. **(Fig. 2)**

Fig. 1: Maximum Temperatures

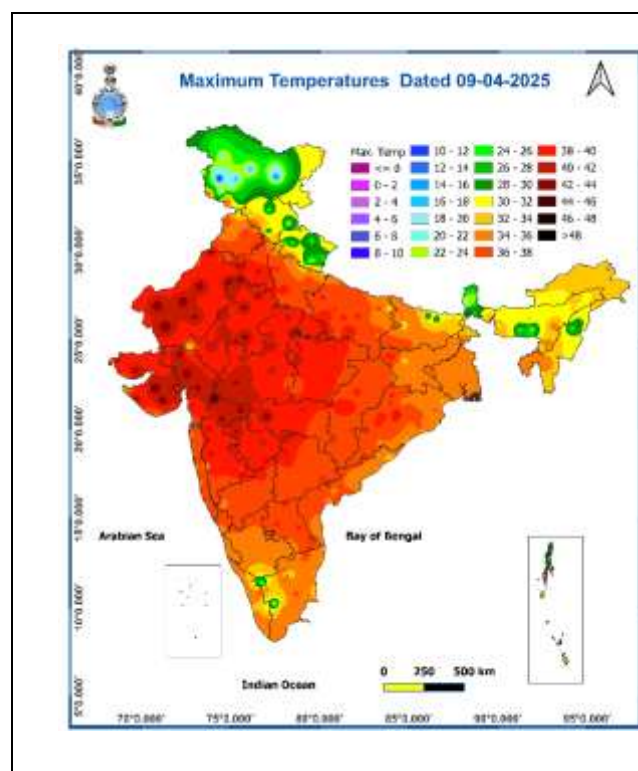
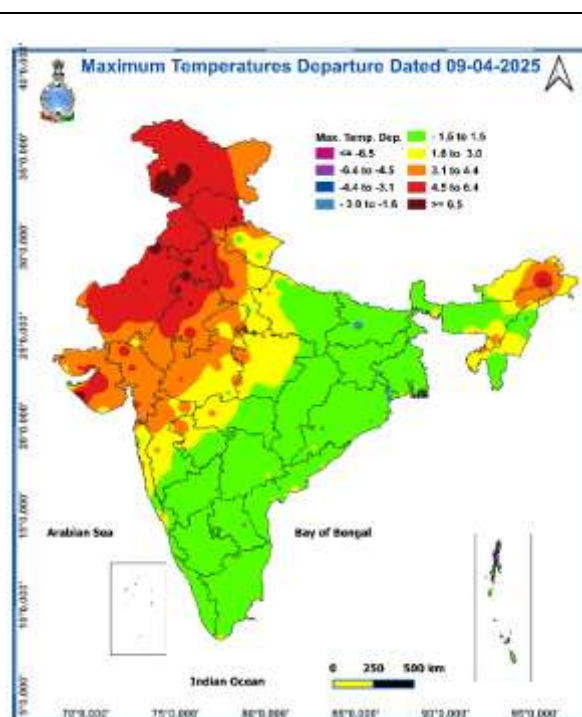
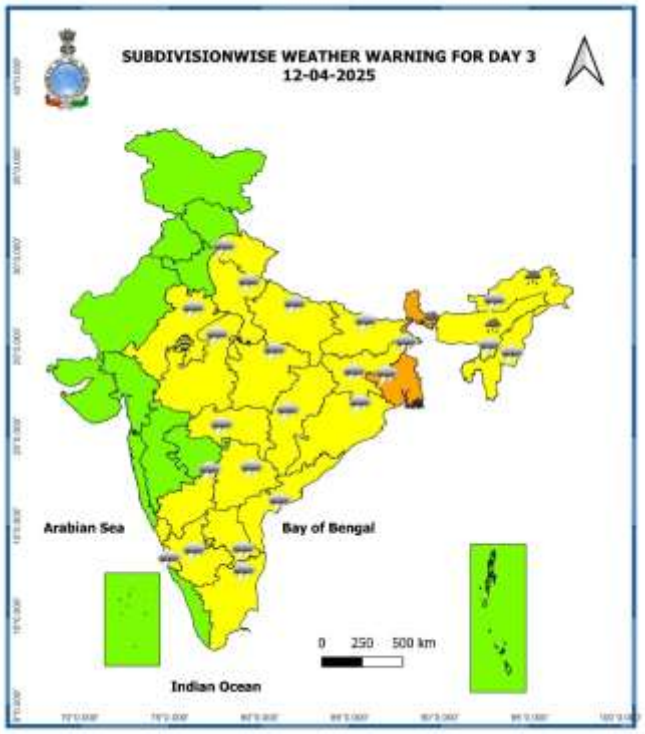
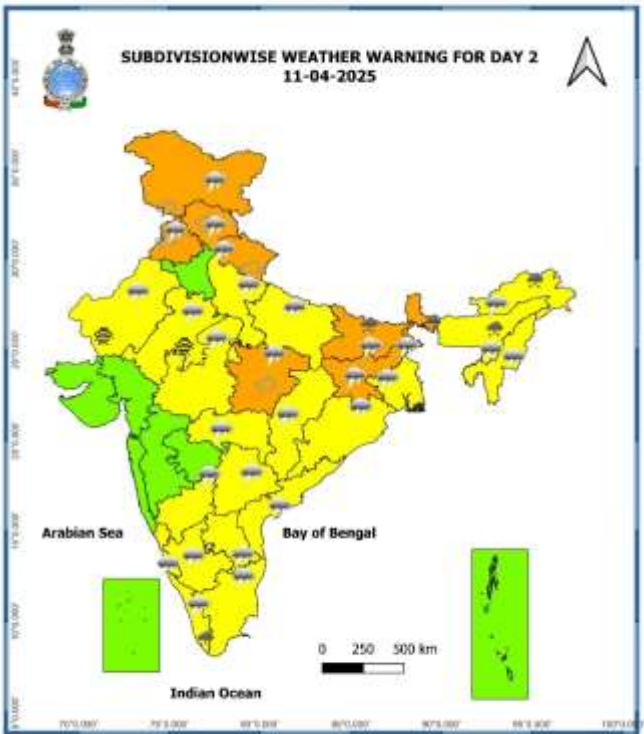
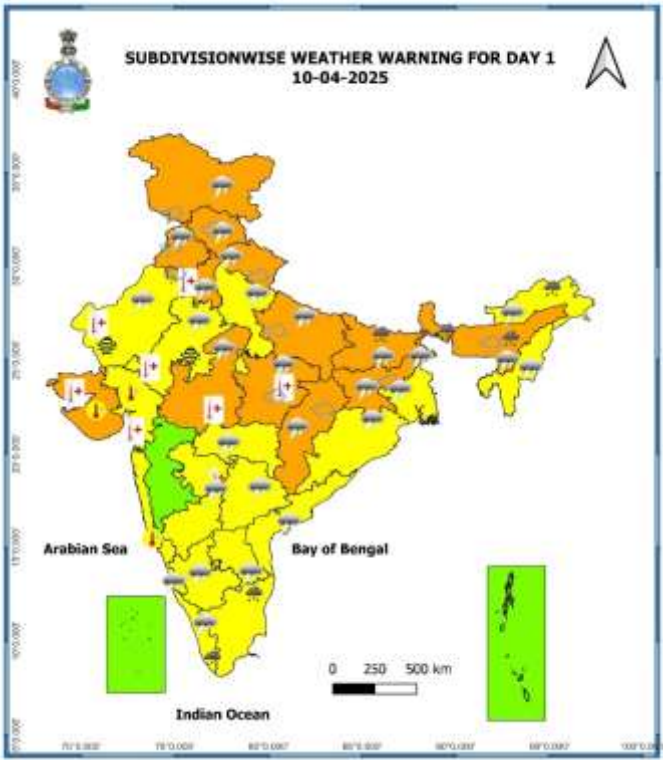


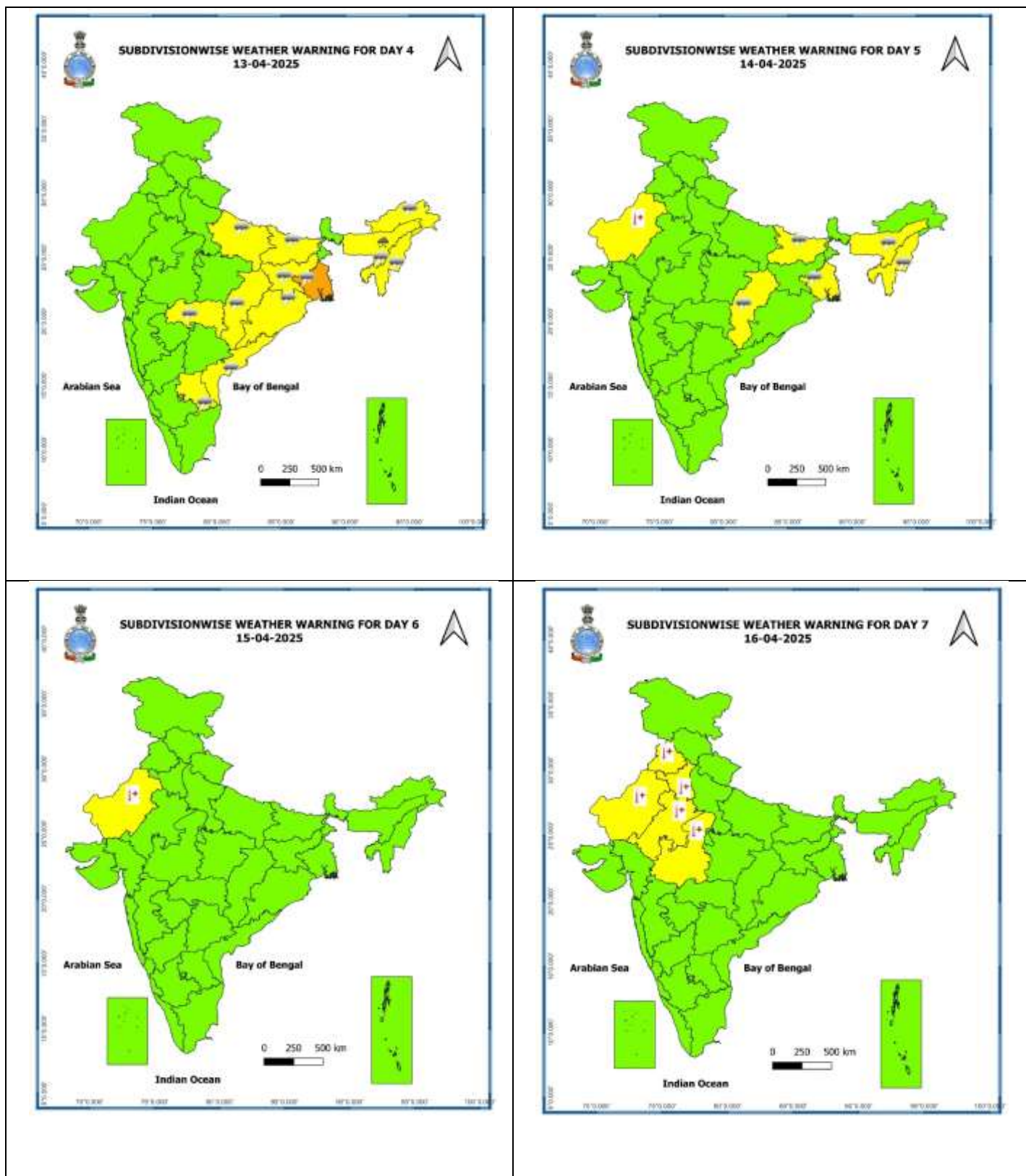
Fig. 2: Departure of Maximum Temperatures



7 Days Rainfall Forecast								
S. No.	Subdivision	10-Apr	11-Apr	12-Apr	13-Apr	14-Apr	15-Apr	16-Apr
		Day 1	Day 2	Day 3	Day 4	Day 5	Day 6	Day 7
1	ANDAMAN & NICOBAR ISLANDS	FWS	WS	FWS	SCT	SCT	SCT	SCT
2	ARUNACHAL PRADESH	FWS	FWS	FWS	FWS	FWS	SCT	SCT
3	ASSAM & MEGHALAYA	FWS	FWS	FWS	FWS	FWS	SCT	SCT
4	NAGALAND, MANIPUR, MIZORAM & TRIPURA	SCT	SCT	SCT	SCT	SCT	SCT	SCT
5	SUB-HIMALAYAN WEST BENGAL & SIKKIM	WS	FWS	FWS	FWS	SCT	SCT	FWS
6	GANGETIC WEST BENGAL	SCT	SCT	SCT	FWS	SCT	SCT	SCT
7	ODISHA	SCT	ISOL	ISOL	ISOL	ISOL	ISOL	ISOL
8	JHARKHAND	SCT	SCT	ISOL	SCT	SCT	SCT	SCT
9	BIHAR	FWS	SCT	SCT	ISOL	ISOL	ISOL	ISOL
10	EAST UTTAR PRADESH	FWS	SCT	SCT	ISOL	DRY	DRY	DRY
11	WEST UTTAR PRADESH	ISOL	ISOL	ISOL	DRY	DRY	DRY	DRY
12	UTTARAKHAND	FWS	WS	FWS	ISOL	DRY	DRY	ISOL
13	HARYANA CHANDIGARH & DELHI	ISOL	SCT	DRY	DRY	DRY	DRY	DRY
14	PUNJAB	ISOL	SCT	ISOL	DRY	DRY	DRY	DRY
15	HIMACHAL PRADESH	SCT	FWS	ISOL	DRY	DRY	DRY	DRY
16	JAMMU & KASHMIR AND LADAKH	FWS	FWS	ISOL	DRY	DRY	DRY	ISOL
17	WEST RAJASTHAN	ISOL	ISOL	DRY	DRY	DRY	DRY	DRY
18	EAST RAJASTHAN	ISOL	ISOL	ISOL	DRY	DRY	DRY	DRY
19	WEST MADHYA PRADESH	ISOL	ISOL	ISOL	ISOL	DRY	DRY	DRY
20	EAST MADHYA PRADESH	ISOL	ISOL	ISOL	ISOL	DRY	DRY	DRY
21	GUJARAT REGION	DRY	DRY	DRY	DRY	DRY	DRY	DRY
22	SAURASHTRA & KUTCH	DRY	DRY	DRY	DRY	DRY	DRY	DRY
23	KONKAN & GOA	ISOL	DRY	DRY	DRY	DRY	DRY	DRY
24	MADHYA MAHARASHTRA	DRY	DRY	DRY	ISOL	DRY	DRY	DRY
25	MARATHAWADA	ISOL	DRY	ISOL	DRY	DRY	DRY	DRY
26	VIDARBHA	ISOL	ISOL	ISOL	ISOL	ISOL	DRY	DRY
27	CHHATTISGARH	ISOL	ISOL	ISOL	ISOL	ISOL	ISOL	ISOL
28	COASTAL ANDHRA PRADESH & YANAM	ISOL	SCT	SCT	SCT	SCT	SCT	SCT
29	TELANGANA	ISOL	ISOL	ISOL	ISOL	ISOL	ISOL	ISOL
30	RAYALASEEMA	ISOL	SCT	SCT	ISOL	ISOL	ISOL	ISOL
31	TAMILNADU PUDUCHERRY & KARAIKAL	ISOL	ISOL	ISOL	ISOL	ISOL	ISOL	ISOL
32	COASTAL KARNATAKA	ISOL	ISOL	ISOL	ISOL	ISOL	ISOL	ISOL
33	NORTH INTERIOR KARNATAKA	ISOL	ISOL	ISOL	ISOL	ISOL	ISOL	ISOL
34	SOUTH INTERIOR KARNATAKA	ISOL	ISOL	ISOL	ISOL	ISOL	ISOL	ISOL
35	KERALA & MAHE	SCT	SCT	SCT	SCT	FWS	FWS	FWS
36	LAKSHADWEEP	FWS	FWS	SCT	DRY	DRY	DRY	DRY

- As the lead period increases forecast accuracy decreases.





- Action may be taken based on ORANGE AND RED COLOUR warnings.
- Vulnerable regions likely urban and hilly areas action may be initiated for heavy rainfall warning.
- As the lead period increases forecast accuracy decreases.

Detailed district wise Multi Hazard weather warning for next five days available at <https://mausam.imd.gov.in/responsive/districtWiseWarningGIS.php>

Weather forecast over Delhi/NCR during 10th to 13th Apr. 2025**Past Weather:**

There has been no large change in minimum and maximum temperature over Delhi/NCR during the past 24 hours. The maximum and minimum temperatures over Delhi are in the range of 39 to 41 °C and 27 to 27 °C respectively. The minimum temperature was above normal upto 06°C and maximum temperature was above normal upto 05°C at most places. Mainly clear sky conditions with predominant surface wind from the southeast direction with wind speeds less than 10 to 12 kmph prevailed during the past 24 hours. Mainly clear sky conditions with wind speed less than 06 kmph from the southwest direction prevailed over the region in the forenoon today.

Weather Forecast:

10.04.2025: Generally cloudy sky. Very light rain/drizzle. Thunderstorm/lightning accompanied with strong surface winds (speed 30 – 40 kmph) with gusting to 50 kmph. The maximum temperature over Delhi is likely to be in the range of 38 to 40°C. The predominant surface wind will likely be from the southeast direction with a wind speed of less than 14 kmph till evening. It would increase becoming less than 20 kmph from the east direction during the night.

11.04.2025: Generally cloudy sky. Very light/light rain. Thunderstorm/lightning accompanied with strong surface winds (speed 20 – 30 kmph) with gusting to 40 kmph. The maximum and minimum temperatures over Delhi are likely to be in the range of 36 to 38°C and 23 to 25°C respectively. The predominant surface wind will likely be from the east direction with a wind speed of 08-10 kmph during morning hours. The wind speed will gradually increase thereafter becoming 12-14 kmph from the southeast direction during the afternoon. It will increase becoming less than 18 kmph from the northeast direction during evening and night.

12.04.2025: Partly cloudy sky. Very light rain/drizzle. The maximum and minimum temperatures over Delhi are likely to be in the range of 35 to 37°C and 19 to 21°C respectively. The predominant surface wind will likely be from the southeast direction with a wind speed of 08-12 kmph during morning hours. The wind speed will gradually decrease becoming 06-08 kmph from the southeast direction in the afternoon. It will increase becoming less than 14 kmph from the southeast direction during evening and night.

13.04.2025: Mainly clear sky. The maximum and minimum temperatures over Delhi are likely to be in the range of 38 to 40°C and 19 to 21°C respectively. The predominant surface wind will likely be from the southeast direction with a wind speed of 06-08 kmph during morning hours. The wind speed will gradually increase becoming 08-12 kmph from the northwest direction in the afternoon. It will decrease becoming less than 08 kmph from the northeast direction during evening and night.

Impact expected and action suggested due to Heat wave to severe heat wave conditions very likely at Rajasthan, south Haryana, Gujarat and Madhya Pradesh on 10th April.

Orange alert Areas

- High temperature & increased likelihood of heat illness symptoms in people who are either exposed to sun for a prolonged period or doing heavy work.
- High health concern for vulnerable people e.g. infants, elderly, people with chronic diseases.
- Avoid heat exposure– keep cool. Avoid dehydration.
- Drink sufficient water- even if not thirsty.
- Use ORS, homemade drinks like lassi, torani (rice water), lemon water, buttermilk, etc. to keep yourself hydrated.

Yellow alert Areas

- Moderate temperature & heat is tolerable for general public but moderate health concern likely for vulnerable people e.g. infants, elderly, people with chronic diseases.
- Avoid heat exposure.
- Wear lightweight, light colour, loose, cotton clothes.
- Cover your head, use a cloth, hat or umbrella.

Impact expected and action suggested due to isolated thunderstorm with lightning/gusty winds & Hailstorm over Haryana, East Uttar Pradesh, north Chhattisgarh, East Madhya Pradesh, Jharkhand, Assam & Meghalaya on 10th April; Jammu-Kashmir-Ladakh-Gilgit-Baltistan-Muzaffarabad, Himachal Pradesh, Uttarakhand and Punjab on 10th & 11th and Uttarakhand during 10th-12th April.

Impact expected:

- Strong wind/hail may damage plantation, horticulture and standing crops.
- Hail may injure people and cattle at open places.
- Partial damage to vulnerable structures due to strong winds.
- Minor damage to kutcha houses/walls and huts.
- Loose objects may fly.

Action suggested:

- Stay indoors, close windows & doors and avoid travel if possible.
- Take safe shelters; do not take shelter under trees.
- Do not lie on concrete floors and do not lean against concrete walls.
- Unplug electrical/ electronic appliances.
- Immediately get out of water bodies.
- Keep away from all the objects that conduct electricity.

Agromet advisories for likely impact of Hailstorm / Heavy Rainfall / Gusty Winds / Heatwave

- In **Assam & Meghalaya, Jharkhand, Jammu & Kashmir, Himachal Pradesh, Uttarakhand, Punjab, Haryana, East Uttar Pradesh and East Madhya Pradesh**, immediately shift the harvested produce in safer places or cover the produce with tarpaulin sheets in the fields to avoid the adverse impact of likely hailstorm. Use hail net and hail caps to prevent mechanical damage in orchards due to hailstorms.
- In **Arunachal Pradesh and Assam & Meghalaya**, immediately harvest the matured crops, fruits and vegetables and shift the harvested produce in safer places or cover the produce with tarpaulin sheets in the fields. Also make provision to drain out excess water from standing crop and vegetable fields.
- In **Bihar, Sub Himalayan West Bengal & Sikkim, Tamil Nadu and Kerala**, drain out excess water from standing crop and vegetable fields.
- In **Madhya Pradesh and Gujarat State**, apply light and frequent irrigation to standing crops in the evening to protect them from heat waves.
- Provide mechanical support to horticultural crops and staking to vegetables to avoid lodging.

Livestock / Poultry / Fishery

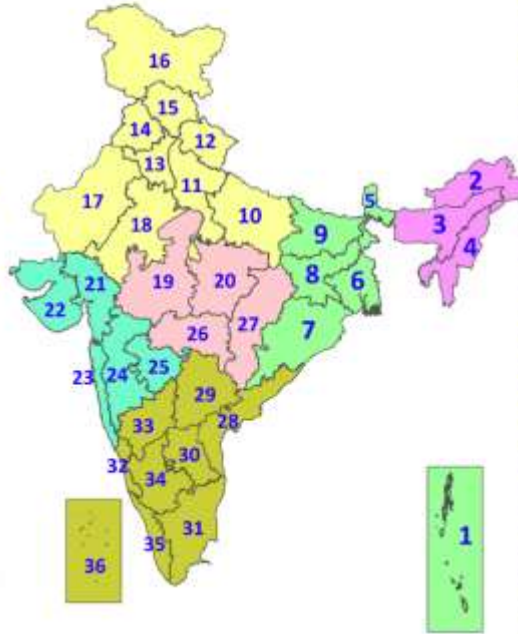
- Keep the animals inside the shed during heavy rainfall / hailstorm and provide them balanced feed.
 - Store feed and fodder in a safe place to prevent spoilage.
 - To reduce the effect of heat wave/high temperature, cover the roof of poultry sheds with grass. Also provide clean, hygienic and plenty of drinking water to animals.
- Construct an outlet with proper netting around the ponds to drain out excess water, thereby preventing fish from escaping in case of overflow

Legends & abbreviations:

- ❖ **Heavy Rain:**64.5-115.5mm; **Very Heavy Rain:**115.6-204.4mm; **Extremely Heavy Rain:** >204.4mm.
- ❖ **Obsy:** Observatory; **AWS:** Automatic Weather Station; **ARG:** Automatic Rain Gauge; **dist:** District; **NH:** National Highway; **KVK:** Krishi Vigyan Kendra; **DVC:** Damodar Valley Corporation; **PTO:** Part Time Office, **Aero:** Aerodrome, **IAF:** Indian Air Force.
- ❖ **Region wise classification of meteorological Sub-Divisions:**
 - **Northwest India:** Western Himalayan Region (Jammu-Kashmir-Ladakh-Gilgit-Baltistan-Muzaffarabad, Himachal Pradesh and Uttarakhand); Punjab, Haryana-Chandigarh-Delhi; West Uttar Pradesh, East Uttar Pradesh, West Rajasthan and East Rajasthan.
 - **Central India:** West Madhya Pradesh, East Madhya Pradesh, Vidarbha and Chhattisgarh.
 - **East India:** Bihar, Jharkhand, Sub-Himalayan West Bengal & Sikkim; Gangetic West Bengal, Odisha and Andaman & Nicobar Islands.
 - **Northeast India:** Arunachal Pradesh, Assam & Meghalaya and Nagaland, Manipur, Mizoram & Tripura.
 - **West India:** Gujarat Region, Saurashtra & Kutch, Konkan & Goa, Madhya Maharashtra and Marathawada.
 - **South India:** Coastal Andhra Pradesh & Yanam, Telangana, Rayalaseema, Coastal Karnataka, North Interior Karnataka, South Interior Karnataka, Kerala & Mahe, Tamil Nadu, Puducherry & Karaikal and Lakshadweep.

LEGENDS

1. अंडमान और निकोबार द्वीपसमूह
2. अरुणाचल प्रदेश
3. असम और मेघालय
4. नागालैंड, मणिपुर, मिजोरम और त्रिपुरा
5. उप-हिमालयी पश्चिम बंगाल और सिक्किम
6. गंगीय पश्चिम बंगाल
7. ओडिशा
8. झारखंड
9. बिहार
10. पूर्वी उत्तर प्रदेश
11. पश्चिम उत्तर प्रदेश
12. उत्तराखंड
13. हरियाणा, चंडीगढ़ और दिल्ली
14. पंजाब
15. हिमाचल प्रदेश
16. जम्मू और कश्मीर और लद्दाख
17. पश्चिम राजस्थान
18. पूर्वी राजस्थान
19. पश्चिम मध्य प्रदेश
20. पूर्वी मध्य प्रदेश
21. गुजरात
22. सौराष्ट्र
23. कोंकण और गोवा
24. मध्य महाराष्ट्र
25. मराठवाड़ा
26. विदर्भ
27. छत्तीसगढ़
28. तटीय आंध्र प्रदेश और यनम
29. तेलंगाना
30. रायलसीमा
31. तमिलनाडु, पुडुचेरी और कराईकल
32. तटीय कर्नाटक
33. आंतरिक उत्तरी कर्नाटक
34. आंतरिक दक्षिणी कर्नाटक
35. केरल और माहे
36. लक्षद्वीप



1. Andaman & Nicobar Islands
2. Arunachal Pradesh
3. Assam & Meghalaya
4. Nagaland, Manipur, Mizoram & Tripura
5. Sub-Himalayan West Bengal & Sikkim
6. Gangetic West Bengal
7. Odisha
8. Jharkhand
9. Bihar
10. East Uttar Pradesh
11. West Uttar Pradesh
12. Uttarakhand
13. Haryana, Chandigarh & Delhi
14. Punjab
15. Himachal Pradesh
16. Jammu & Kashmir and Ladakh
17. West Rajasthan
18. East Rajasthan
19. West Madhya Pradesh
20. East Madhya Pradesh
21. Gujarat
22. Saurashtra
23. Konkan & Goa
24. Madhya Maharashtra
25. Marathwada
26. Vidarbha
27. Chhattisgarh
28. Coastal Andhra Pradesh & Yanam
29. Telangana
30. Rayalaseema
31. Tamilnadu, Puducherry & Karaikal
32. Coastal Karnataka
33. North Interior Karnataka
34. South Interior Karnataka
35. Kerala & Mahe
36. Lakshadweep

SPATIAL DISTRIBUTION (% of Stations reporting)

% Stations	Category	% Stations	Category
76-100	Widespread (WS/Most Places)	26-50	Scattered (SCT/A Few Places)
51-75	Fairly Widespread (FWS/Many Places)	1-25	Isolated (ISOL)



Fog



Heavy Rain



Very Heavy Rain



Extremely Heavy Rain



Thunder & Lightning



Hailstorm



Dust Raising Winds



Heavy Snow



Dust Storm



Heat Wave



Warm Night



Hot Day



Hot & Humid



Strong Surface Winds



Cold Wave



Cold Day



Ground Frost

COLOUR CODED WARNING

No Warning (No Action)
Watch (Be Aware)
Alert (Be Prepared To Take Action)
Warning (Take Action)

Probabilistic Forecast

Terms	Probability of Occurrence (%)
Unlikely	< 25
Likely	25 - 50
Very Likely	50 - 75
Most Likely	> 75

DEFINITION/CRITERIA

Rain/ Snow *	Heavy: 64.5 to 115.5 mm/cm * Very Heavy: 115.6 to 204.4 mm/cm * Extremely Heavy: > 204.4 mm/cm *
Heat Wave	When maximum temperature of a station reaches $\geq 40^{\circ}\text{C}$ for plains and $\geq 30^{\circ}\text{C}$ for hilly regions (a) Based on Departure from normal Heat Wave: Maximum Temperature Departure from normal 4.5°C to 6.4°C . Severe Heat Wave: Maximum Temperature Departure from normal $\geq 6.5^{\circ}\text{C}$ (b). Based on Actual maximum temperature Heat Wave: When actual maximum temperature $\geq 45^{\circ}\text{C}$. Severe Heat Wave: When actual maximum temperature $\geq 47^{\circ}\text{C}$ (c). Criteria for heat wave for coastal stations When maximum temperature departure is $> 4.5^{\circ}\text{C}$ from normal. Heat Wave may be described provided maximum temperature $\geq 37^{\circ}\text{C}$
Warm Night	When maximum temperature remains 40°C Warm Night: When minimum temperature departure 4.5°C to 6.4°C . Severe Warm Night: When minimum temperature departure $> 6.4^{\circ}\text{C}$.
Cold Wave	When minimum temperature of a station $\leq 10^{\circ}\text{C}$ for plains and $\leq 0^{\circ}\text{C}$ for hilly regions. (a). Based on departure Cold Wave: Minimum Temperature Departure from normal -4.5°C to -6.4°C . Severe Cold Wave: Minimum Temperature Departure from normal $\leq -6.5^{\circ}\text{C}$ (b) Based on actual Minimum Temperature (for Plains only) Cold Wave : When Minimum Temperature is $\leq 4.0^{\circ}\text{C}$ Severe Cold Wave: When Minimum Temperature is $\leq 2.0^{\circ}\text{C}$ (c) For Coastal Stations When Minimum Temperature departure is $\leq -4.5^{\circ}\text{C}$ & actual Minimum Temperature is $\leq 15^{\circ}\text{C}$
Cold Day	When minimum temperature of a station $\leq 10^{\circ}\text{C}$ for plains and $\leq 0^{\circ}\text{C}$ for hilly regions Based on departure Cold Day: Maximum Temperature Departure from normal -4.5°C to -6.4°C . Severe Cold Day: Maximum Temperature Departure from normal $\leq -6.5^{\circ}\text{C}$
Fog	Phenomenon of small droplets suspended in air and the horizontal visibility $< 1\text{km}$ Moderate Fog: When the visibility between 500-200 metres Dense Fog: when the visibility between 50- 200 metres Very Dense Fog: when the visibility < 50 metres
Thunderstorm	Sudden electrical discharges manifested by a flash of light (Lightning) and a sharp rumbling sound (thunder)
Dust/Sand Storm	An ensemble of particles of dust or sand energetically lifted to great heights by a strong and turbulent wind.
Frost	Ice deposits on ground Air temperature $\leq 4^{\circ}\text{C}$ (over Plains)
Squall	A strong wind that rises suddenly, lasts for atleast 1 minute. Moderate: Wind speed 52-61 kmph Severe: Wind speed 62-87 kmph Very Severe: Wind speed > 87 kmph
Sea State	Effect of various waves in the sea over specific area Rough to very rough: Wind speed 41-62 kmph (22-33 knots) & Wave height 2.5-6 metre High to very high: Wind speed 63-117 kmph (34-63 knots) & Wave height 6-14 metre Phenomenal: Wind speed > 117 kmph (> 63 knots) & Wave height > 14 metre
Cyclone	Cyclonic Storm: Wind speed 62-87 kmph (34-47 knots) Severe Cyclonic Storm: Wind speed 88-117 kmph (48-63 knots) Very Severe Cyclonic Storm: Wind speed 118-165 kmph (64 - 89 knots) Extremely Severe Cyclonic Storm: Wind speed 166-220 kmph (90 - 119 knots) Super Cyclone Storm: Wind speed > 220 kmph (> 119 knots)

* Red colour warning does not mean "Red Alert", Red colour warning means "Take Action".
 Forecast and Warning for any day is valid from 0830 hours IST of day till 0830 hours IST of next day.
 For more details, kindly visit <https://mausam.imd.gov.in> or contact: 011-2434-4599
 (Service to the Nation since 1875)

Hot and Humid: When maximum temperatures remain 3°C above normal along with the above normal relative humidity.